

**Version 4 – Level Probe in plastic housing**  
**Electric interface through a lateral mounted connector and appropriate plug.**  
**Case moduled. Protection class IP 67/68.**

**GPP**

**Panel Connector**

Elektrode lenth available 5 to 4000mm (please specify with your order)

1 - 7 elektrodes

All parts which may touch the medium are made from physiologically harmless materials

For conductive filling level acquisition



**Technical data**

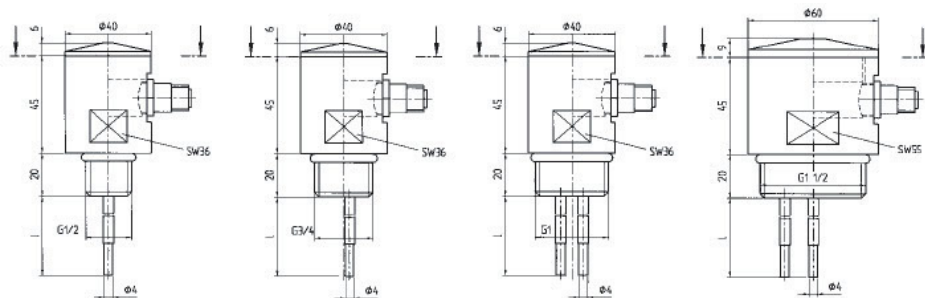
**Mounting method:** Thread  
**Mounting orientation:** any  
**Media temperature:** max. 90°C  
**Media pressure:** max. 10 bar (+60°C)

**Probe-head material:** PPH  
**Electrode material:** V4A / 1.4571 (optional HAC-C4; Titanium)  
**Coating:** Polyolifin (optional Kynar)  
**Sealing ring:** NBR 70

Size	Electrodes	Standard-Model
1/2"	2	GPPE - 2VP4
3/4"	2	GPPF - 2VP4
3/4"	3	GPPF - 2VP4
1"	2	GPPG - 2VP4
1"	3	GPPG - 3VP4
1"	4	GPPG - 4VP4

Size	Electrodes	Standard-Model
1 1/2"	2	GPPI - 2VP4
1 1/2"	3	GPPI - 3VP4
1 1/2"	4	GPPI - 4VP4
1 1/2"	5	GPPI - 5VP4
1 1/2"	6	GPPI - 6VP4
1 1/2"	7	GPPI - 7VP4

**Dimensions**



**Options**

**Distance fastener** Material PPH  
**Lock-nut** Material PPH  
**Mounting bracket** Material V2A / 1.4301

**Note** ⚠

The interface plug ist **not** part of shipment.